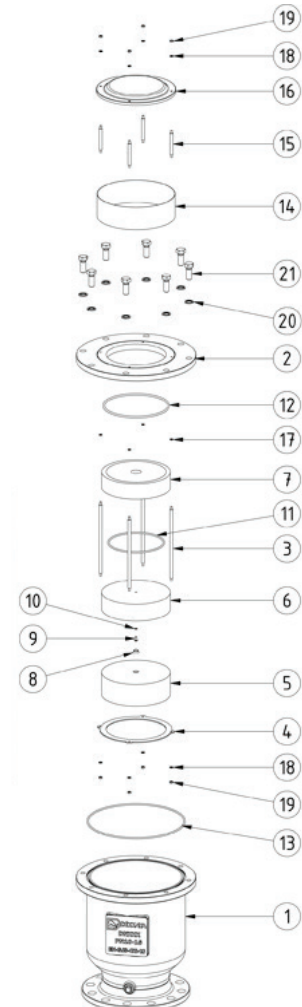




PARST AND MATERIAL LIST

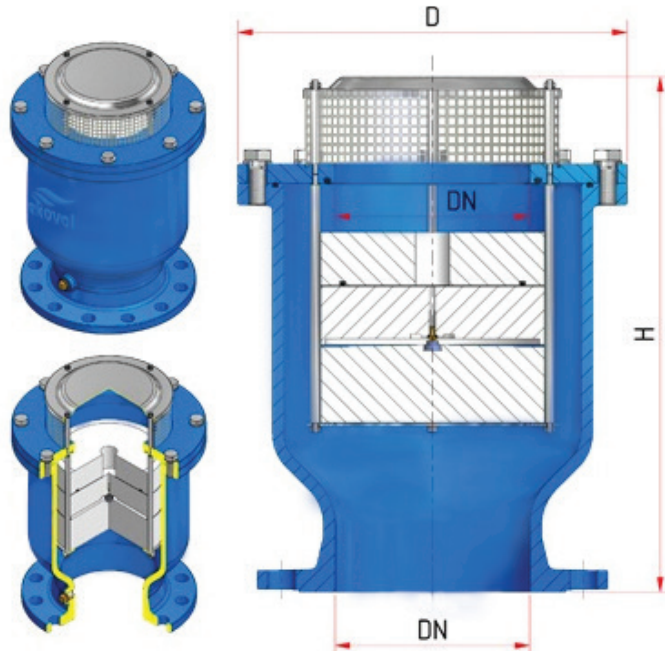
| No | Part Name | Material |
|----|--------------|-----------------|
| 1 | Body | GGG40 |
| 2 | Cover | GGG40 & AISI304 |
| 3 | Shaft | AISI304 |
| 4 | Bottom Plate | AISI304 |
| 5 | Lower Float | HDPE |
| 6 | Middle Float | HDPE |
| 7 | Upper Float | HDPE |
| 8 | Gasket | EPDM |
| 9 | Camshaft | AISI304 |
| 10 | O-Ring | NBR |
| 11 | O-Ring | NBR |
| 12 | O-Ring | NBR |
| 13 | O-Ring | NBR |
| 14 | Filter Cover | AISI304 |
| 15 | Pin | AISI304 |
| 16 | Filter Cover | AISI304 |
| 17 | Gasket | Fiber |
| 18 | Washer A2 | A2 (AISI304) |
| 19 | Hexagon Nut | A2 (AISI304) |
| 20 | Washer A2 | A2 (AISI304) |
| 21 | Hexagon Bolt | A2 (AISI304) |



eko11000 DYNAMIC ANTI SHOCK AIR VALVE PN10/16/25/40



TECHNICAL DRAWING



DIMENSIONS

| DN (mm) | H (mm) | D (mm) | W (kg) | Capacity (nl/s) |
|---------|--------|--------|--------|-----------------|
| 50 | 245 | 164 | 12 | 60 |
| 80 | 280 | 210 | 18 | 160 |
| 100 | 310 | 220 | 27 | 250 |
| 150 | 320 | 240 | 55 | 520 |
| 200 | 480 | 408 | 100 | 1020 |
| 250 | 610 | 495 | 130 | 1570 |
| 300 | 730 | 595 | 190 | 2260 |

